

# Avui

Score

Judit Neddermann

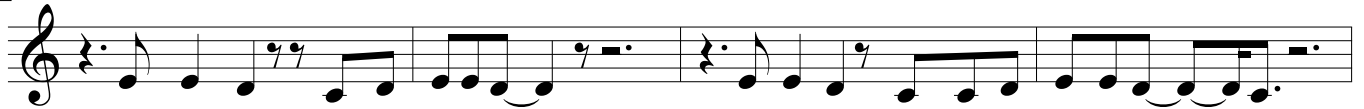
$\text{♩} = 80$  C F C/E F

INTRO



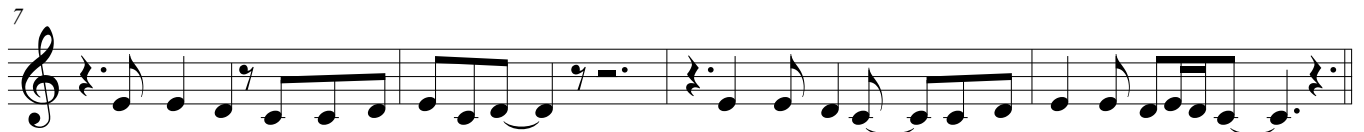
A

C F C/E F C F C/E F



O - broels ulls neix un di - a nou La fos - cor noem dei - xa veu - re res

C F C/E F C F C/E F



Po - soels peusla - munt el ter - ra fred Sen - toels ar - bres que plo - ren des - perts

B

Dm C G F C G



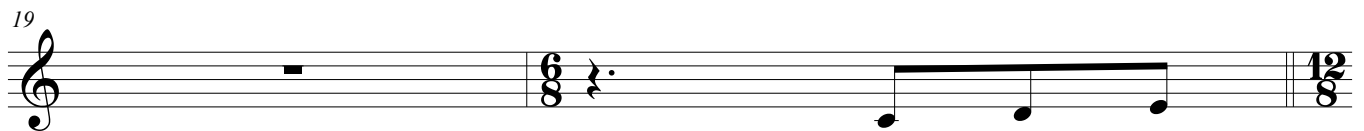
I ba - llo la dan - sa de la - so - le - dat les pors m'a - ban - do - nen a ca - da nou

F C G F C G7sus4



pas Iel sol surt amb for - ça per i - l'lu - mi - nar el blanc que m'a - llu - nya del mar

G7sus4 G



Iés queés a -

C

C Dm F G7sus4 C Dm F G7sus4



vui a - quell di - a que sents que la vi - da, iés queés a - vui a - quell di - a que sents que tot pot ser, iés queés a -

C Dm F G7sus4 C Dm F G7sus4



vui a - quell di - a que tot et som - ri - iu iés queés vui - - - Iés queés a -

2

Avui

**INTRO**

C

F

C/E

F

**D.S. al Fine**

Musical staff with notes and chords. The staff contains a sequence of notes: C4, D4, E4, F4, G4, A4, B4, C5, B4, A4, G4, F4, E4, D4, C4. Chords are indicated above the staff: C, F, C/E, F. A dynamic marking '(vui.)' is written below the first few notes. The staff ends with a double bar line.

Musical staff with notes and chords. The staff contains a sequence of notes: C4, D4, E4, F4, G4, A4, B4, C5, B4, A4, G4, F4, E4, D4, C4. Chords are indicated above the staff: C. A dynamic marking '31' is written above the first few notes. The staff ends with a double bar line.